

This [Joomla hosting](#)

[Joomla tutorial](#) quickly leads you through [installing Joomla 1.5](#). It details both a

[Joomla Joomla](#) is a complex series of ~~Web server~~ that run on a web server. When you browse a Joomla

Running and Testing Joomla Without a Hosting Account

You cannot download [Joomla Joomla](#) and run it on your computer like an exe file. It has to have a web server

~~Now, before we shell out our hard earned money for a hosting account,~~ actually run a web server on your

What you need to pull this off is some software that runs Apache, PHP and MySQL (or PostgreSQL) on your computer.

I am going to quickly run through setting up WAMP, not that this package is windows specific.

Download WAMP from the above link, and then install it. It will create a folder c:/wamp/www

Run WAMP, you should get a handy icon in your system tray:

You need the dial to be white to continue. Note if you run Skype, it interferes with WAMP and so you have

Now open a browser and localhost (no "www")

You should see the following page:

If you are not seeing this then you should stop and figure out why. You have to get this page before you

You should see your folder called "Joomla" in the list of Your Projects. Click on that folder and you will get

Installing a Joomla Site on a Hosting Account

So let's assume you either have a hosting account, or are going to get yourself one. There are some minor

Here are the minimum requirements for Joomla 1.0

- PHP 4.2.x or above - www.php.net
- MySQL 3.23.x or above www.mysql.com
- Apache 1.13.19 or above www.apache.org

You must ensure that you have MySQL, XML and Zlib support built into your PHP.

help.joomla.org/content/view/34/132/

For Joomla 1.5 it is recommended you have PHP 4.4.3 or above (for enhanced security).

A thread on the Joomla forums lists various hosting companies who are active Joomla community members.

Note that from now on, the steps are more or less the same whether you are installing Joomla on a Linux or Windows server.

Getting the Joomla Files

This part is easy. Head www.joomla.org and you will see a link to the download section on the home page.



The version number is the number given. This image shows that it's the 11th release in the 1.0 series.

Or you can head straight to the Forge and you will see all possible downloads:

forge.joomla.org/sf/frs/do/viewSummary/projects.joomla/frs

All versions are here as well as various upgrades from one release to another, important if you already have an older version.

Important Note:

You cannot upgrade from Joomla 1.0 to Joomla 1.5. There are significant enough changes in the code to require a full installation.

"Joomla 1.5 does not provide an upgrade path from earlier versions. Converting an older site to a Joomla 1.5 site is a complex task. See dev.joomla.org/component/option,com_jd-wp/Itemid,33/p,107/ for more information.

This has been a deliberate choice to minimize the number of users who might attempt the "overwrite the

"Joomla 1.5 is so significantly changed from 1.0 that there is no 'upgrade' path. This is the reason that w
David Gal - forum.joomla.org/index.php/topic,63232.0.html

Unzipping the files

You need to unzip, or unpack the big Joomla files you have onto your server. If you are running as a loc

Note:

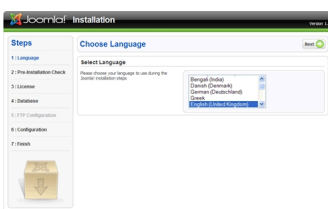
I don't recommend using Fantastico. Many hosts provide it but don't always have the most current file

Installing Joomla through a Web Browser

If you have got this far that means you have unzipped the Joomla package to either a remote web host or

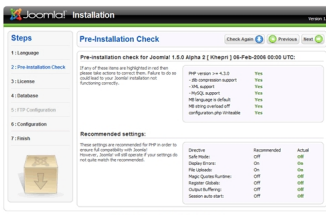
Using your browser of choice (Firefox of course), navigate to the location of all the localhost/Joomla. You

Choose Language:



Here is the first look at some of the internationalization features of Joomla 1.5, you can select amongst r

Pre-Installation Check



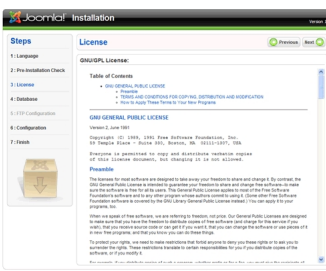
A critical part in the installation process, this checks if all the minimum system requirements are met.

The first set are required minimums, if they are red (not met) then you need to find a new environment (or

The second set is recommended settings. If you don't meet them you can still install Joomla but it you ex

Once you are green to go, click next.

License



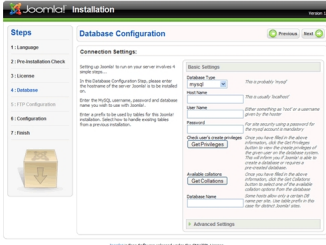
Joomla is released under a GNU/GPL license. One of the most common questions regarding this license

Why?

Joomla is an open source project, it receives no funding from any kind of revenue from selling its software

OK, I'll get off my soapbox now

Database Configuration



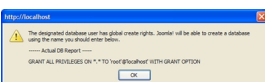
This is one of the main pages of the installation process, it's where you need to enter important information

The hostname will almost always be localhost

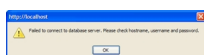
The Username and password will have been provided by your hosting company, usually in an email you receive

If you are installing on a localhost using WAMP or XAMPP, the Username is usually root and the password is usually root

Once you have entered this information, click Get Privileges and the Joomla installer checks to see if the database user has sufficient permissions



If you made an error, or the user does not have sufficient permissions, then you get this message (after clicking Get Privileges)



If the user you have does not have permissions then you can ask your hoster to pre-create a SQL database

Available collations refer to various character sets available for different languages. When you click the l



Pick a Database name for the SQL database that Joomla will use. Use some sort of name that is not com

If you are running several Joomla sites but only have access to one database, you will need to use a tab

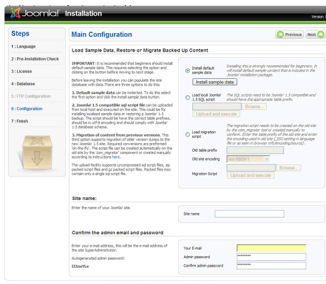
Note if your user did not have database creation privileges and you were provided with a database inste

The advanced settings are concerned with what content the site starts with and also the table prefixes m



If you have an existing site and you are reinstalling over the top, you will need to select Drop Existing Ta

Main Configuration

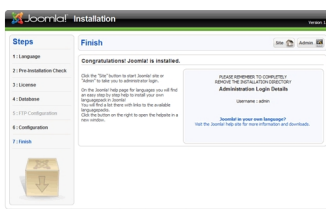


The Main Configuration page determines how you will insert content into your site. You have three choices:

- **Install Sample Data**
This installs the default Joomla content that you have probably seen all over the web with "Welcome to Joomla!"
- **Load SQL script**
This is a SQL file that might have a customized set of content
- **Migration from previous versions**
This is a special function that is part of a process to migrate a Joomla site running on 1.0 to 1.5 and so on.

Give your site a name (pay attention to SEO keywords) and then enter the super administration information.

Cross your eyes, close your fingers and click next. Hopefully you will see this screen



If you do get this result, you can investigate different language options, view the site or jump right to the Joomla! administrator interface.

If you don't get this page, then you have some work to do. Often issues arise because of server environment problems.

Need some help with Joomla 1.5?

Head over to the forum.joomla.org/index.php/board,304.0.html

